

Unit #2 Test Review-Review Assign #3: Graphing Functions/Domain and Range of a Function(Reference: Lesson #19, #20, #21, #23, #25, #26, #28, #29, #30, #35, #41, #49, #115 & #119)

Problem

1. Please graph each of the following functions $f(x)$. Once graphed determine the domain and range of each of the functions.

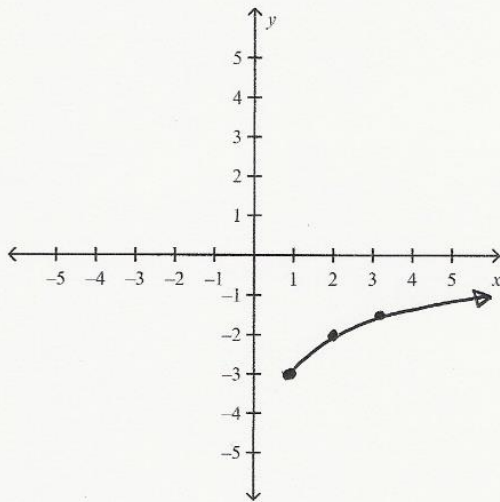
1. $f(x) = x^3 + 3$

2. $f(x) = 3x^2 - 3$

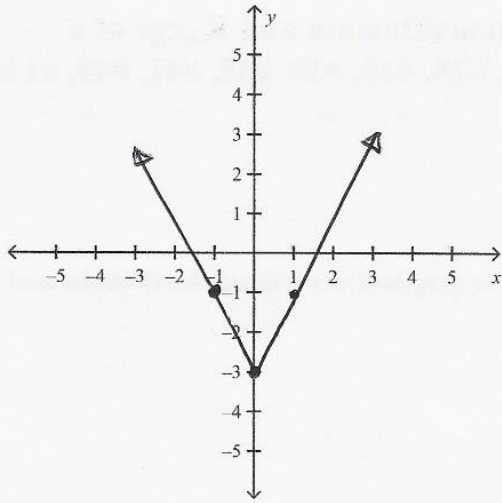
3. $f(x) = 2\sqrt{x} + 2$

4. $f(x) = 2|x| - 3$

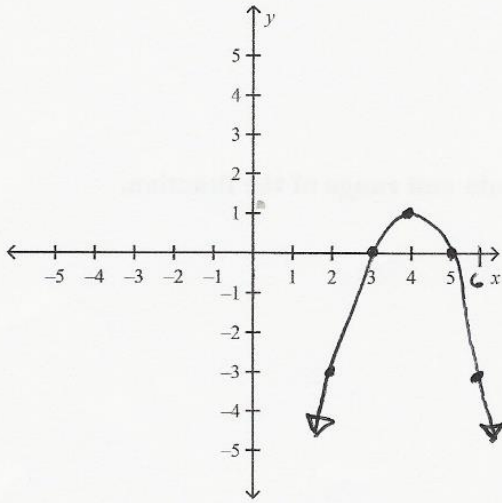
5. For each of the following graphs, please state the domain and range of the function.



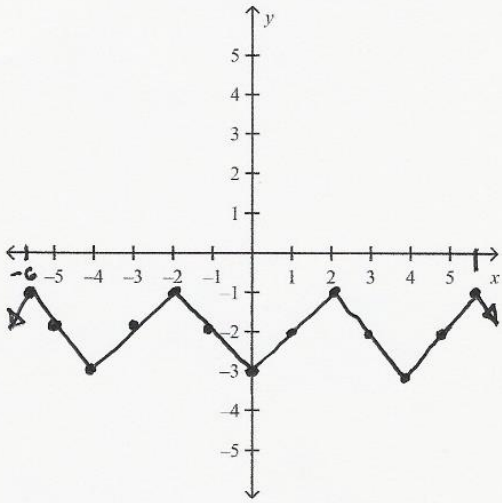
5.



6.

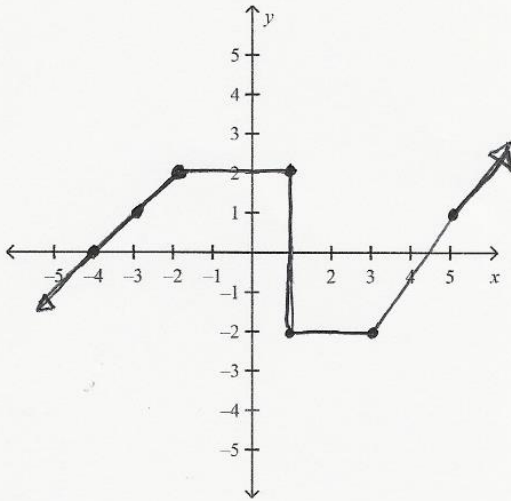


7.

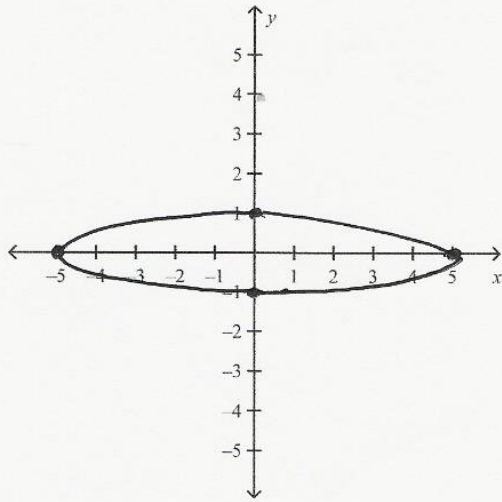


8.

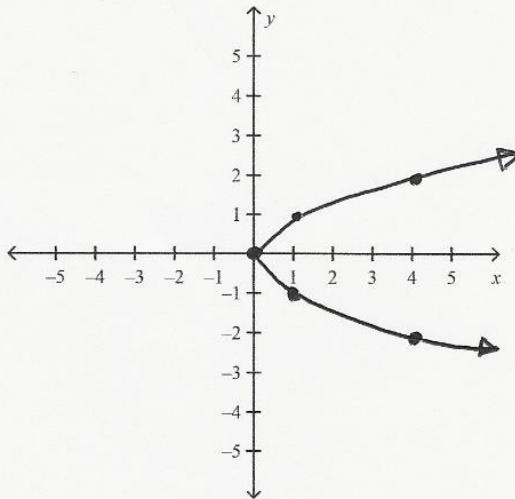
9. For each of the following graphs state whether it is a function or not a function and give an explanation to why you arrived at that answer.



9.



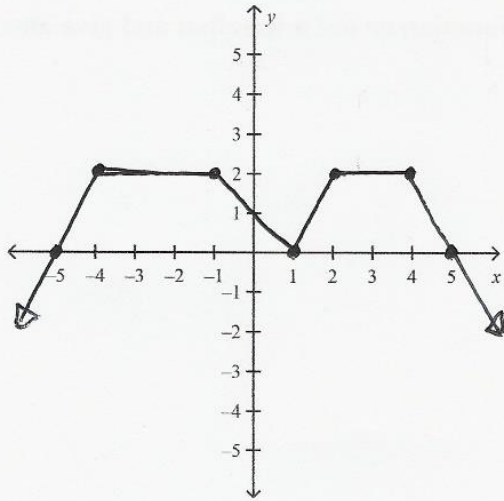
10.



11.

Name: _____

ID: A



12.